

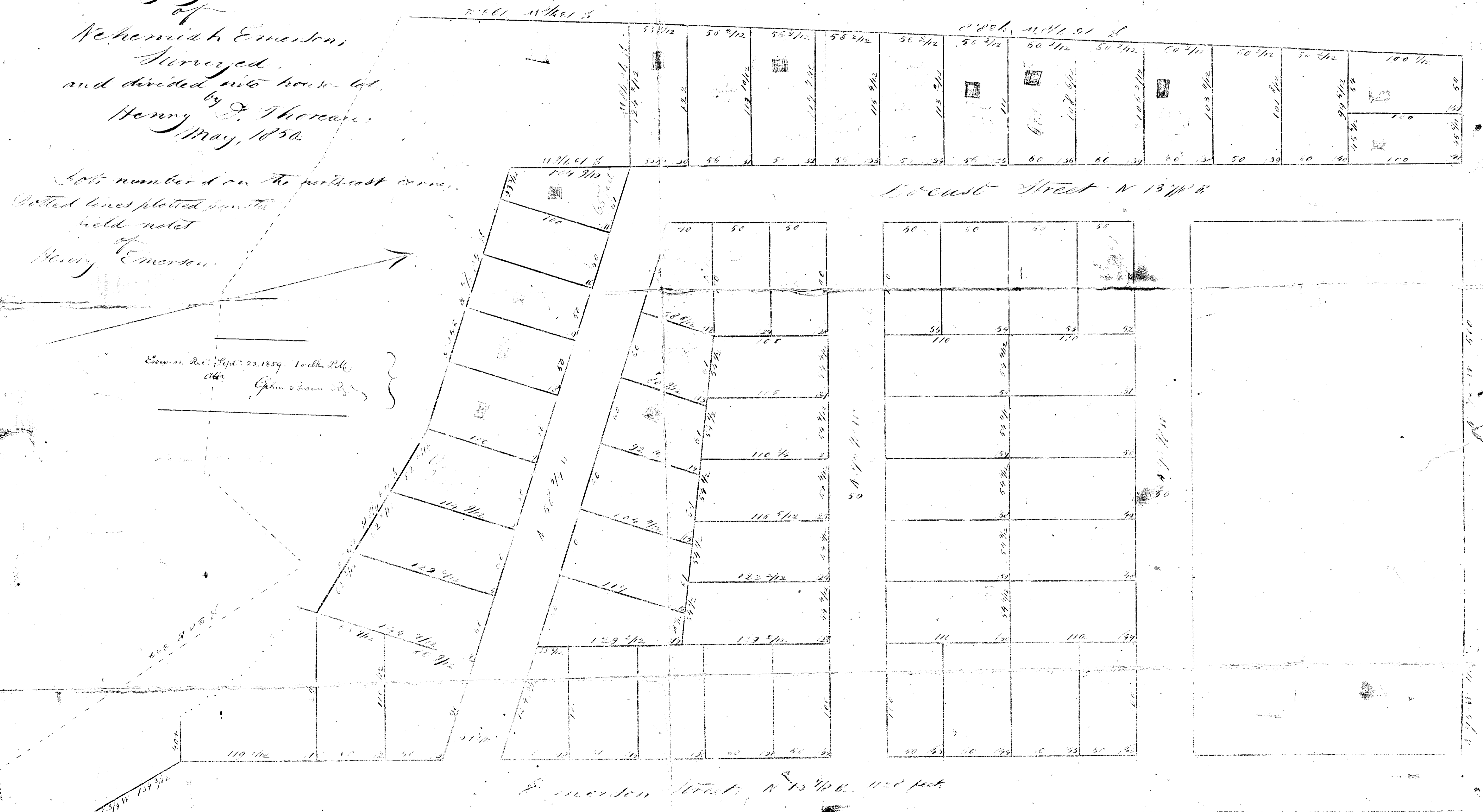
Plan

of  
 a Tract of land in Haverhill, Mass.,  
 belonging to the heirs  
 of  
 Nehemiah Emerson;  
 Surveyed,  
 and divided into house lots,  
 by J. Thoreau;  
 Henry  
 May, 1850.

lots numbered on the northeast corner.  
 Dotted lines plotted from the  
 field notes  
 of  
 Henry Emerson.

Essex Co. Rec. Sept. 23, 1859. Town of Haverhill.  
 John Brown Reg.

574-6  
 2718  
 017  
 4718  
 3160



Scale of 44 feet to an inch.  
 100 150 200 250 300 350 400 450