

CORNER RECORD

PWFB 1516

718

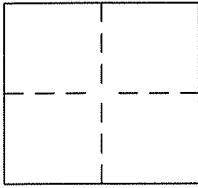
Document Number _____

City of BEVERLY HILLS

County of Los Angeles, California

Brief Legal Description LOT 42, TRACT NO. 24481, MB 644 PGS 30 TO 32.

19172



CORNER TYPE

- Govt Corner
- Control
- Meander
- Property
- Rancho
- Other
- Date of Survey SEPT 9, 2015

ELEVATIONS SHOWN HEREON ARE RELATIVE TO CITY OF BEVERLY HILLS BM 385 HAVING A NADV88 ELEV.=1053.93 FT. SAID BM IS A PK NAIL IN CENTER OF CURB RADIUS AT NW CORNER LOMA VISTA DR. & ARKELL DR.

Vert. Datum NGVD29 NADV88
 Meas. Units: Imperial
 (US SURVEY FOOT)

Corner - Left as found Found and tagged Established Reestablished Rebuilt

Identification and type of corner found:

Evidence used to identify or procedure used to establish or reestablish the corner:

SEE SKETCH

**BEING A SURVEY OF 515 ARKELL DRIVE
 IN THE CITY OF BEVERLY HILLS,
 STATE OF CALIFORNIA**

A description of the physical condition of the monument as found and as set or reset:

SEE SKETCH. NOTHING FOUND OR SET UNLESS NOTED. ALL MONUMENTS FLUSH UNLESS NOTED

HENNON Surveying & Mapping, Inc.	601 E. GLENOAKS BLVD., # 208 GLENDALE, CALIFORNIA 91207 (818)243-0640 WWW.HENNON.COM EMAIL: HENNON@AOL.COM
---	---

SURVEYORS STATEMENT

HSM PROJECT NO. 3332

This Corner Record was prepared by me or under my direction in conformance with the Land Surveyors Act on OCTOBER 21, 2015

Signed Robert D. Hennon P.L.S. No. 5573 (EXP. 9-30-17)
ROBERT HENNON REVISED MARCH 10, 2016



COUNTY SURVEYORS STATEMENT

This Corner Record was received NOV 19 2015 APR 14 2016
and examined and filed APR 25 2016

Signed Curt M. O'Bryan (P.L.S.) or R.C.E. No. 6388
Title DEPUTY COUNTY SURVEYOR



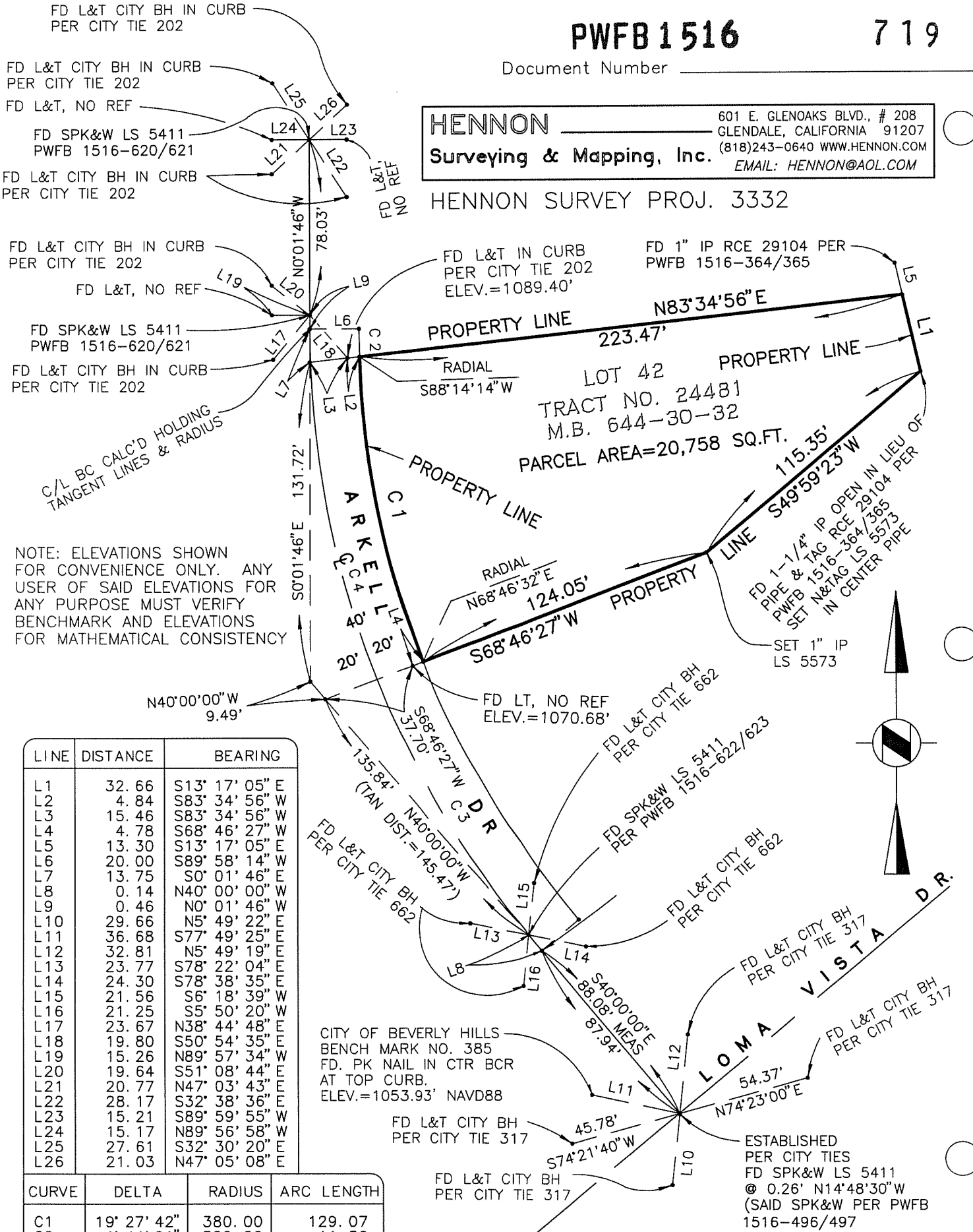
County Surveyors Comment _____

HENNON

Surveying & Mapping, Inc.

601 E. GLENOAKS BLVD., # 208
 GLENDALE, CALIFORNIA 91207
 (818)243-0640 WWW.HENNON.COM
 EMAIL: HENNON@AOL.COM

HENNON SURVEY PROJ. 3332



NOTE: ELEVATIONS SHOWN FOR CONVENIENCE ONLY. ANY USER OF SAID ELEVATIONS FOR ANY PURPOSE MUST VERIFY BENCHMARK AND ELEVATIONS FOR MATHEMATICAL CONSISTENCY

LINE	DISTANCE	BEARING
L1	32.66	S13° 17' 05\"/>

CURVE	DELTA	RADIUS	ARC LENGTH
C1	19° 27' 42\"/>		