

Line

STATE OF CALIFORNIA

DIVISION OF HIGHWAYS

21 Notes this Page

Station

Monuments

Sect. - E.

Co. Rt. L Sec. E

Date 10/5/31 Page 375

Cont. - 41EC3

Cloudy - Cool  
 P. Steensma - Res. Eng.  
 J. Hutchinson - Asst. Res.  
 L. Spinnery - Notes  
 E. Conway - X  
 H. Peshkoff - H. CH.  
 C. Hammit - R. CH.

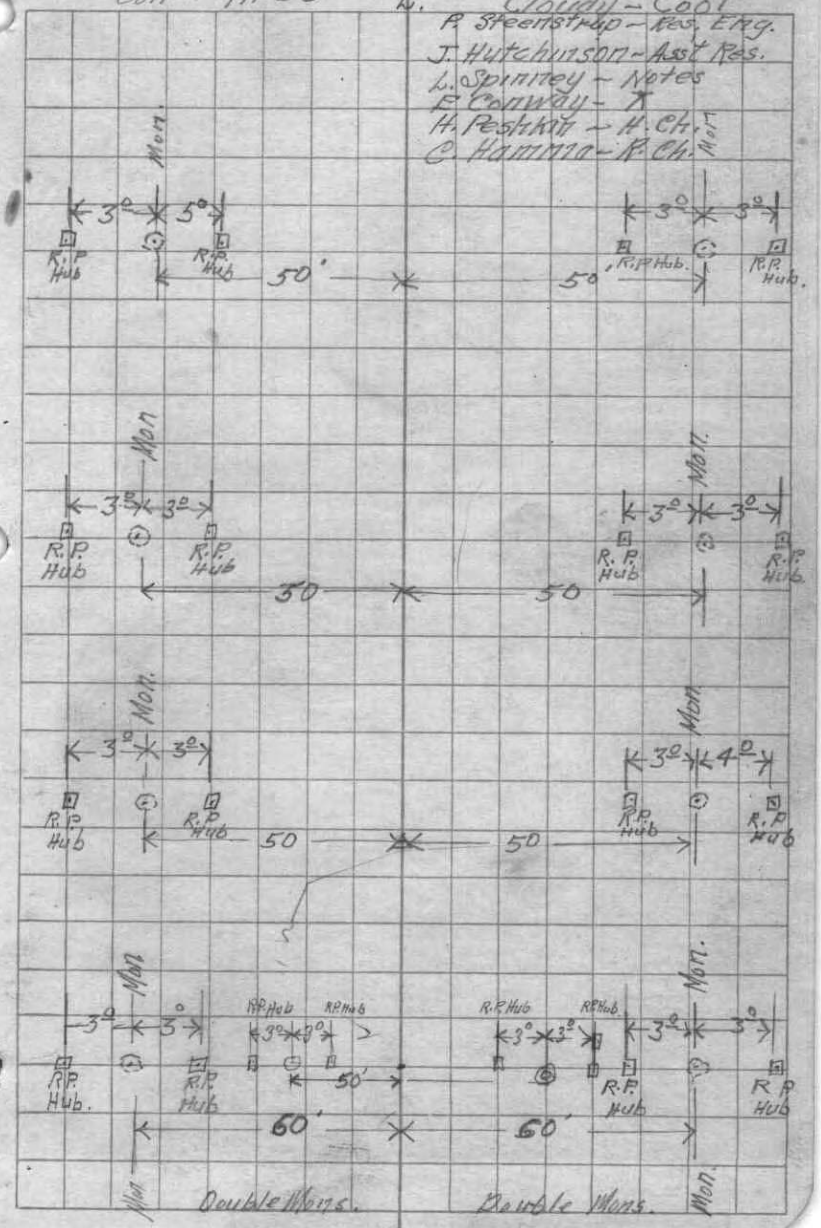
194+66<sup>84</sup>  
EC

1931 Monument Staking Notes  
 Note:  
 -Double monument RP hubs at each mon. should help mon. get into the proper location.  
 -Crew apparently led by the Resident Engineer.  
 -These notes don't indicate that the RPs were set perp. to the tangent back or ahead (see maps, next). Some project notes do, some don't.  
 -These notes also don't show if the centerline stations were run in as part of a single centerline traverse, or if they were controlled by pulling in sections of centerline from various RPs that survived construction and may have originally been set in piece meal ways.

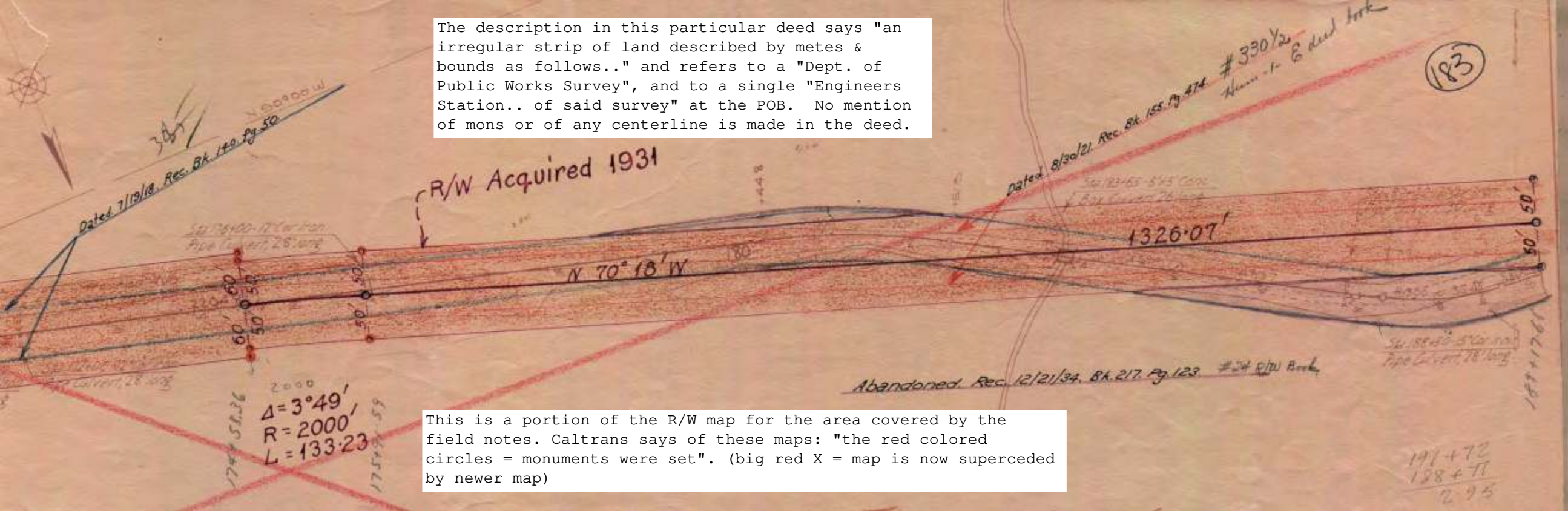
0-189+17<sup>66</sup> BC  
E: 189+17<sup>56</sup> =  
P.O.T.

175+91<sup>59</sup>  
EC

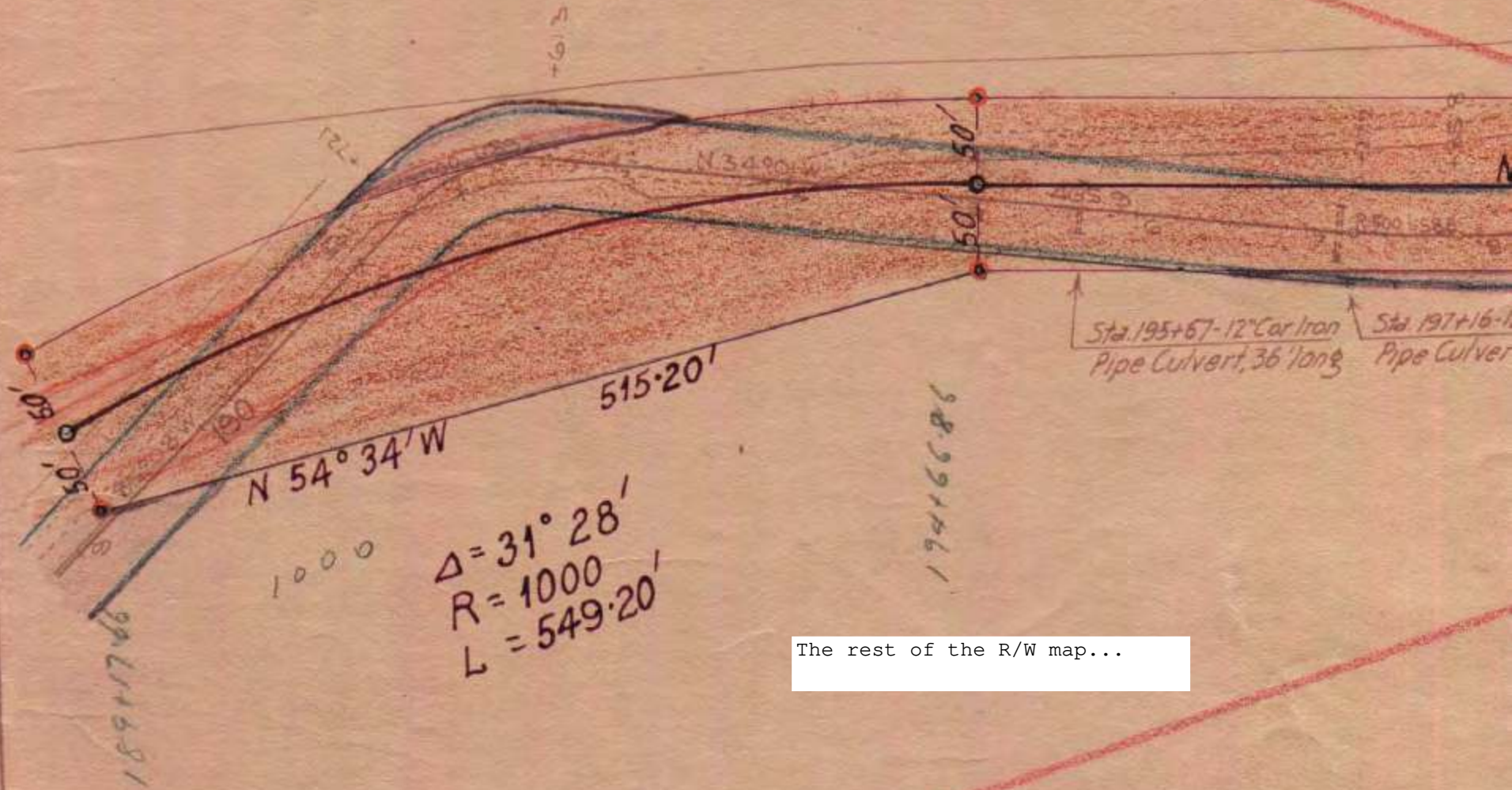
174+58<sup>36</sup>  
B.C

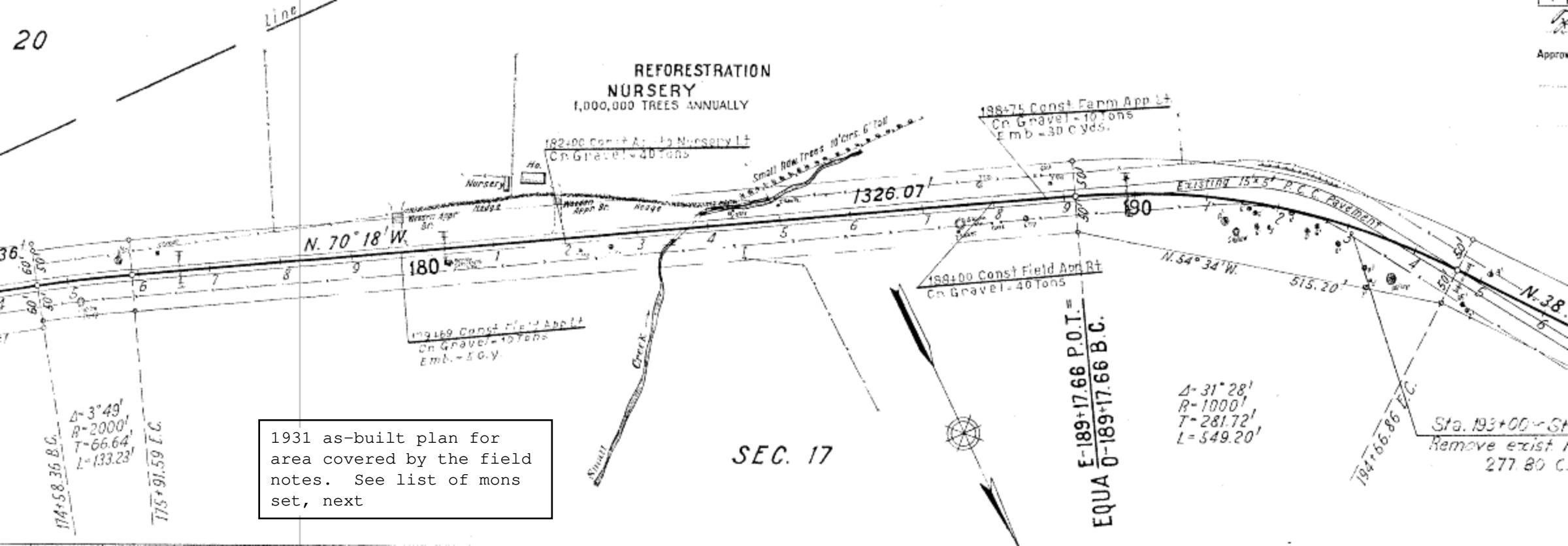


The description in this particular deed says "an irregular strip of land described by metes & bounds as follows.." and refers to a "Dept. of Public Works Survey", and to a single "Engineers Station.. of said survey" at the POB. No mention of mons or of any centerline is made in the deed.



This is a portion of the R/W map for the area covered by the field notes. Caltrans says of these maps: "the red colored circles = monuments were set". (big red X = map is now superceded by newer map)



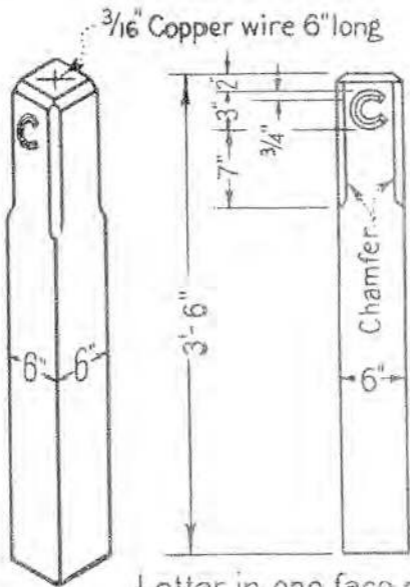


1931 as-built plan for  
area covered by the field  
notes. See list of mons  
set, next

MONUMENTS			
Station	R/W		Ref.
	Lt.	Rt.	
"E" 441+59.93	1		
" 442+51.21	1		
" 450+00.00	1		
" 455+00.00	1		
" 441+99.69		1	
<b>Sub-Total</b>	<b>5</b>	<b>1</b>	
<b>From Access Marker Summ.</b>		<b>10</b>	
<b>"E" Sub-Total</b>		<b>165</b>	
"F" 8+22.03	1		
" 8+33.87	1		
" 10+98.87		1	
" 16+00.00		1	
" 20+00.00	1		
" 25+00.00		1	
" 26+00.00	X		

Typical list of monuments set by a project, as included in as-built plan set.

" 33+00.00		1	
" 43+50.00	1	1	
" 47+00.00		1	



Letter in one face only  
 Recess to be  $\frac{1}{4}$  inch

## R/W MONUMENT & FREEWAY ACCESS MARKER

Typical monument detail in the asbuilt plan set.  
 Hence the name "C-Mon".