

KEY TO SURVEY MARKS

In the following list "Standard Rod and Cap" denotes a Puncturemark on a 2 in. Aluminum Cap stamped "KENT MCMILLAN, SURVEYOR, RPLS 4341" and numbered as noted, affixed to a 5/8 in. Iron Rod. "Standard Spike and Washer" denotes a Puncturemark on a 3/8 in. Spike with a 2 in. Aluminum Washer stamped "KENT MCMILLAN, SURVEYOR, RPLS 4341" and numbered as noted.

- | No. | Description |
|------|--|
| 1-20 | Set Standard Spike and Washer in Hole Drilled in Concrete |
| 100 | Found 1/4 in. Copper Pin in Concrete in Iron Casting on Established Centerline of Chicon St. (ref: City FB 973 Pg. 49; FB 984 Pg. 18; District Map 15) |
| 101 | Found 1/4 in. Copper Pin in Concrete in Iron Casting on Established Centerline of Chicon St. (ref: City FB 973 Pg. 50; FB 984 Pg. 18; District Map 15) |
| 102 | Found 1/4 in. Copper Pin in Concrete in Iron Casting on Established Centerline of Chicon St. (ref: City FB 973 Pg. 49; FB 984 Pg. 18; District Map 15) |
| 111 | Center of Base of old 2 in. Galv. Chain Link Fence Post |
| 133 | Found old 1/2 in. Iron Pipe with Deformed Top |
| 134 | Found old 1/2 in. Iron Pipe with Deformed Top |
| 145 | Found old Square-Head Galvanized Bolt taken for "Steel Pin Set" shown in City FB 2488 Pg. 60 |
| 150 | Found old 1/2 in. Iron Pipe (12 in. Down) |
| 154 | Found old 3/4 in. Iron Pipe |
| 155 | Found old 1/2 in. Iron Pipe |
| 156 | Found old 1/2 in. Iron Pipe |
| 159 | Found Cross Out on West End of Flat-top Conc Curb Inlet (ref: City FB 1171 Pg. 30) |
| 160 | Found Cross Out on West End of Flat-top Conc Curb Inlet (ref: City FB 1171 Pg. 30) |
| 161 | Found old 3/4 in. Iron Pipe |
| 167 | Center of Ford Axle Found with 3-1/2 in., 24-tooth Gear attached taken to have been placed by Marlon O. Metcalfe, Surveyor, in August, 1931 (ref: Metcalfe FB 89 Pg. 17) |
| 168 | Found old 3/4 in. Iron Pipe in Concrete taken for original SE corner of Lot 48 of POPE'S RESUBDIVISION set by O.E. Metcalfe, Civil Engineer, in 1916 or 1917. (City FB 1153 Pg. 57; FB 1414 Pg. 44) |
| 174 | Found old 1/2 in. Iron Rod (moderately corroded, post-1947 deformations) in Concrete 0.30 ft. East of Center of 2 in. Galvanized Chain Link Fence Post |
| 200 | Point in Reconstructed Position of Intersection of Established Centerlines of Chicon Street and E. 1st St. |
| 201 | Point in Reconstructed Position of Concrete Monument on Established Centerline of Chicon Street at Intersection of Monument Line Offset 10 ft. South of Established Centerline of E. 1st St. (ref: City FB 707 Pg. 18; District 15 Map; FB 953 Pg. 37; FB 1171 Pg. 30; FB 2488 Pg. 47) |
| 202 | Unmarked Point on Established Centerline of Chicon Street |
| 203 | Unmarked Point on Established Centerline of Chicon Street |
| 204 | Unmarked Point at Station 0+00 on Centerline of Willow Street as shown City FB 2488 Pg. 48 |
| 205 | Unmarked Point at Station 0+00 on Centerline of Canterbury Street as shown City FB 2488 Pg. 59 |
| 206 | Unmarked Point on Established Centerline of Chicon Street as shown City FB 1171 Pg. 30 and FB 1414 Pg. 44 |
| 207 | Unmarked Point on Established Centerline of Chicon Street as shown City FB 1414 Pg. 44 |
| 208 | Unmarked Point on Centerline of Willow Street in Position of Station 444.18 as shown City FB 2488 Pg. 49 |
| 209 | Reconstructed Position of Concrete Monument on Established Centerline of E. 1st Street as shown on District Map 15 and City FB 953 Pg. 37 |

- | | |
|-----|--|
| 210 | Point on Established Centerline of E 1st Street at Intersection of Centerline of original 60 ft. R-O-W of Lynn St. |
| 211 | Point on Centerline of 60 ft. R-O-W of Willow St. at Intersection of Centerline of original 60 ft. R-O-W of Lynn St. |
| 212 | Point on Centerline of 60 ft. R-O-W of Canterbury St. at Intersection of Centerline of original 60 ft. R-O-W of Lynn St. running North |
| 213 | Unmarked Point on Centerline of Willow St. in Position of Station 8+88.34 as shown City FB 2488 Pg. 50 |
| 214 | Unmarked Point on Centerline of Canterbury St. in Position of Station 8+88.34 as shown City FB 2488 Pg. 61 |
| 215 | Reconstructed Position of Concrete Monument on Established Centerline of E. 1st St. as shown on District Map 15 and City FB 953 Pg. 37 |
| 216 | Point on Established Centerline of E 1st Street at Intersection of Centerline of original 60 ft. R-O-W of Anthony St. |
| 217 | Reconstructed Position of Concrete Monument on Established Centerlines of E. 1st and Canadian Streets as shown on District Map 15 and in City FB 2488 Pg. 47 |
| 218 | Point on Centerline of Willow St. in Position of Station 13+36.66 as shown City FB 2488 Pg. 52 |
| 219 | Point on Centerline of Canterbury St. in Position of Station 13+35.77 as shown City FB 2488 Pg. 52 |
| 222 | Unmarked Point on Centerline of 60 ft. R-O-W of Willow St. at Intersection of Centerline of original 60 ft. R-O-W of Anthony St. |
| 223 | Unmarked Point on Centerline of 60 ft. R-O-W of Canterbury St. at Intersection of Centerline of original 60 ft. R-O-W of Anthony St. |
| 224 | Unmarked Point on Established Centerline of Chicon St. at Intersection of Centerline of Alley |
| 225 | Unmarked Point on Centerline of 60 ft. R-O-W of Lynn St. at Intersection of Centerline of Alley |
| 226 | Set Standard Rod and Cap "226" |
| 227 | Set Standard Rod and Cap "227" |
| 228 | Unmarked Point in Position of original NE corner of Lot 1 |
| 229 | Unmarked Point in Position of original SE corner of Lot 1 |
| 230 | Set Standard Rod and Cap "230" |
| 231 | Point on South Line of Willow Street at Lot 8 from which Iron Rod No. 174 bears N20-25-43E, 0.22 and Spike and Washer No. 11 bears N4-58-43W, 6.28 ft. |

COORDINATE LIST

Coordinates in the following list are in units of US SURVEY FEET and refer to the Texas Coordinate System of 1983 (Central Zone), NAD83 (2011) Epoch 2010.0 as derived by survey from AUSTIN BRP2 CORES LI PHASE CENTER, NGS PID 0J9486, taking its position to be the following as published by the National Geodetic Survey:

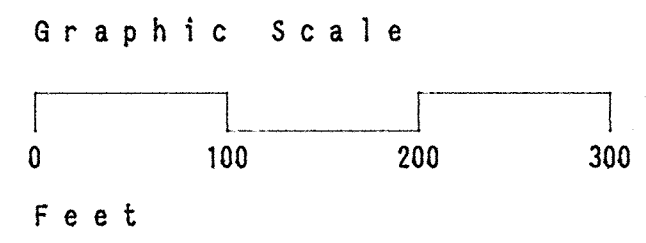
30-18-42.08823 (N)
97-45-22.71226 (W)
193.940m (E11 Hgt)

Pt. No.	N	E
1	10068171.144	3120635.097
2	10067920.384	3120491.174
3	10067569.023	3120362.525
4	10067203.770	3120272.430
5	10066940.541	3120133.846
6	10066556.415	3119989.923
7	10066388.352	3120440.877
8	10066419.217	3119939.671
9	10066213.542	3119910.710
10	1006623.966	3120078.359
11	10066108.704	3120295.714
12	10066084.438	3121234.503
13	10066259.138	3120352.782
14	10065230.806	3119496.137
17	10064877.939	3119410.036
18	10065881.935	3119738.463
19	10065590.826	3119677.179
20	10067897.260	3120510.679
101	10068223.326	3120632.507
102	10067231.114	3120263.978
111	10066483.659	3120169.099
112	10066044.952	3120325.170
134	10066121.808	3120290.211
143	10066082.508	3120308.558
145	10066434.112	3120472.109
154	10066099.965	3120179.322
155	10066231.902	3120396.328
156	10066231.845	3120396.455
159	10066212.463	3119928.536
160	10066212.936	3119920.423
161	10066184.393	3119954.854
167	10065223.642	3119481.729
168	10065279.920	3119502.692
174	10066517.914	3120078.961
200	10066906.995	3120140.581
201	10066897.528	3120137.081
202	10065269.491	3119530.691
203	10065213.213	3119509.729
204	10066573.198	3120016.696
205	10066239.493	3119892.832
206	10066239.773	3119892.089
207	10066573.336	3120016.330
208	10066416.628	3120432.338
209	10066750.858	3120556.123
210	10066749.829	3120551.527
211	10066416.299	3120435.198
212	10066082.785	3120308.676
213	10066260.049	3120847.981
214	10065926.346	3120724.207
215	10066593.783	3120971.766
216	10066592.444	3120975.322
217	10066435.435	3121392.116
218	10066102.007	3121267.517
219	10065768.626	3121142.935
222	10066258.914	3120850.994
223	10065925.415	3120756.677
224	10066406.555	3119954.210
225	10066249.542	3120371.037
226	10066403.008	3119984.900
227	10066534.649	3120033.932
228	10066398.765	3120394.648
229	10066267.144	3120345.584
230	10066386.068	3120029.873
231	10066517.708	3120078.904

BEARINGS OF LINES shown upon this map refer to GRID NORTH of the Texas Coordinate System of 1983 (Central Zone).

DISTANCES noted on this map are SURFACE DISTANCES in US Survey Feet, computed using a Project Average Combined Scale Factor of 0.999947.

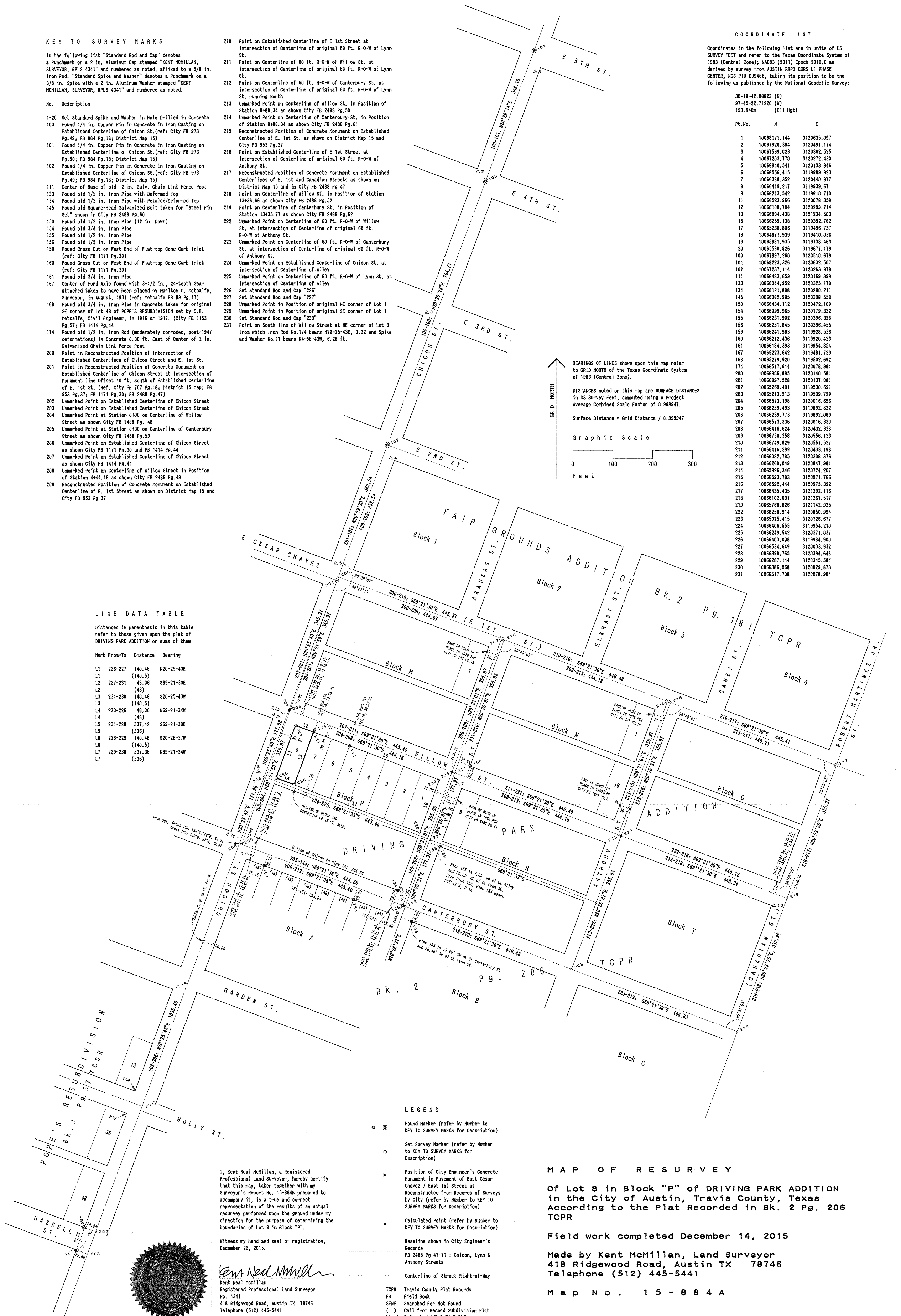
Surface Distance = Grid Distance / 0.999947



LINE DATA TABLE

Distances in parenthesis in this table refer to those given upon the plat of DRIVING PARK ADDITION or sums of them.

Mark	From-To	Distance	Bearing
L1	226-227	140.48	N20-25-43E
L1	(140.5)		
L2	227-231	48.06	S69-21-30E
L2	(48)		
L3	231-230	140.48	S20-25-43W
L3	(140.5)		
L4	230-226	48.06	N69-21-34W
L4	(48)		
L5	231-228	337.42	S69-21-30E
L5	(336)		
L6	228-229	140.48	S20-26-37W
L6	(140.5)		
L7	229-230	337.38	N69-21-34W
L7	(336)		



LEGEND

- Found Marker (refer by Number to KEY TO SURVEY MARKS for Description)
- Set Survey Marker (refer by Number to KEY TO SURVEY MARKS for Description)
- Position of City Engineer's Concrete Monument in Pavement of East Cesar Chavez / East 1st Street as Reconstructed from Records of Surveys by City (refer by Number to KEY TO SURVEY MARKS for Description)
- Calculated Point (refer by Number to KEY TO SURVEY MARKS for Description)
- Baseline shown in City Engineer's Records FB 2488 Pg 47-71 : Chicon, Lynn & Anthony Streets
- Centerline of Street Right-of-Way
- TCPR Travis County Plat Records
- FB Field Book
- SFNF Searched For Not Found
- () Call from Record Subdivision Plat
- L(no) Refer to LINE DATA TABLE

MAP OF RESURVEY
Of Lot 8 in Block "P" of DRIVING PARK ADDITION in the City of Austin, Travis County, Texas According to the Plat Recorded in Bk. 2 Pg. 206 TCPR

Field work completed December 14, 2015

Made by Kent McMillan, Land Surveyor
418 Ridgewood Road, Austin TX 78746
Telephone (512) 445-5441

Map No. 15-884A

I, Kent Neal McMillan, a Registered Professional Land Surveyor, hereby certify that this map, taken together with my Surveyor's Report No. 15-884B prepared to accompany it, is a true and correct representation of the results of an actual resurvey performed upon the ground under my direction for the purpose of determining the boundaries of Lot 8 in Block "P".

Witness my hand and seal of registration, December 22, 2015.

Kent Neal McMillan
Kent Neal McMillan
Registered Professional Land Surveyor
No. 4341
418 Ridgewood Road, Austin TX 78746
Telephone (512) 445-5441

