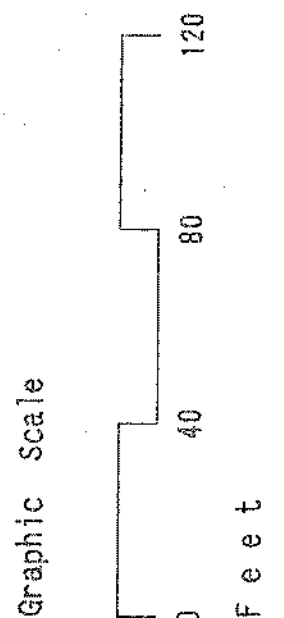
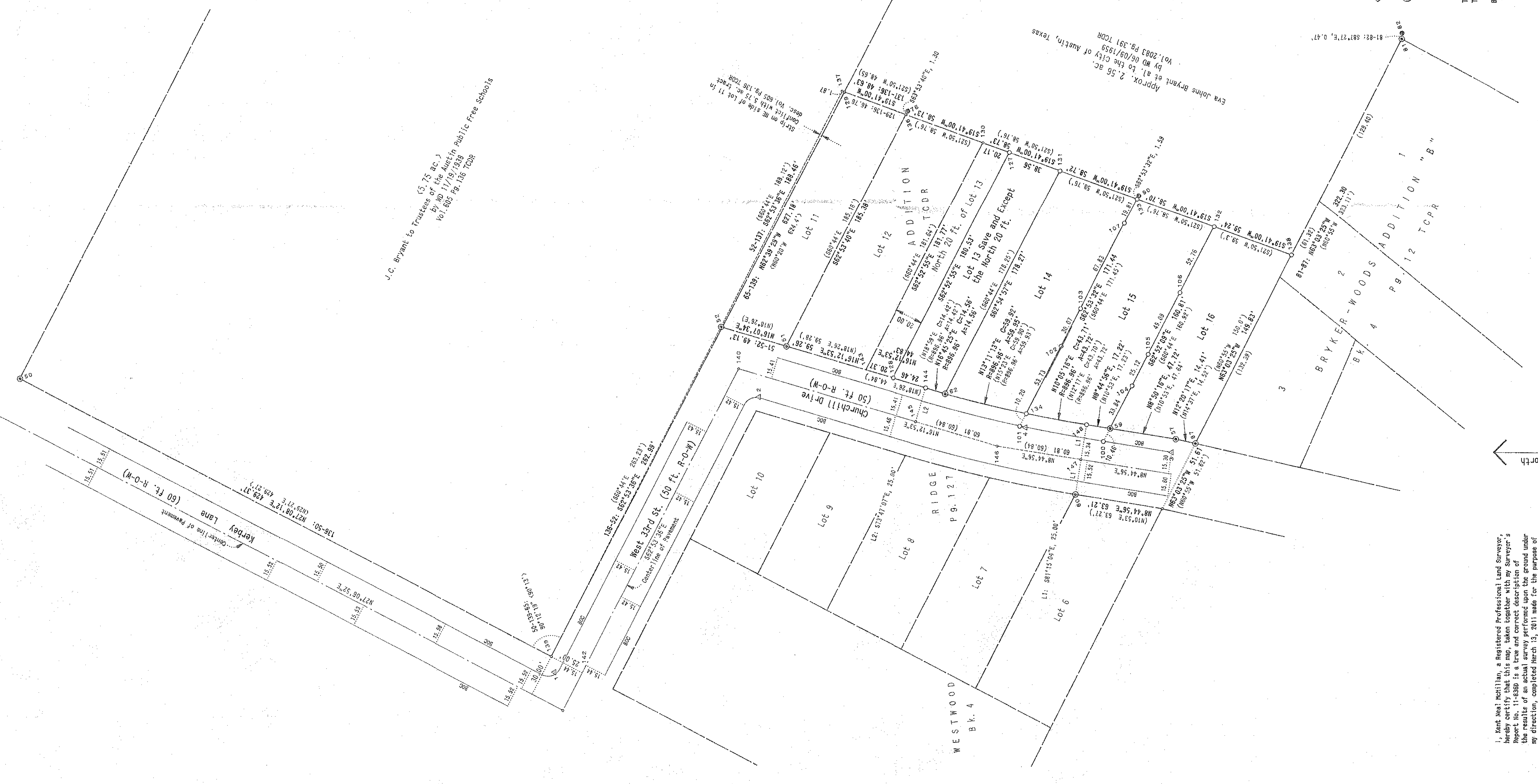


COORDINATE LIST

Coordinates in the following list are in units of US Survey Feet and refer to the Texas Coordinate System of 1983 (Central Zone) NAD83 (GCRS86) Epoch 2002.0 as derived by GIS vectors from the COGS site, TAD, and extended across the project by a combination of GIS and conventional methods.

No.	X (ft.)	Y (ft.)
1	10084016.868	3111891.672
2	10083810.779	3111364.450
3	10083574.518	3111326.571
4	10083574.518	3111326.571
5	10083574.518	3111326.571
6	10083574.518	3111326.571
7	10083574.518	3111326.571
8	10083574.518	3111326.571
9	10083574.518	3111326.571
10	10083574.518	3111326.571
11	10083574.518	3111326.571
12	10083574.518	3111326.571
13	10083574.518	3111326.571
14	10083574.518	3111326.571
15	10083574.518	3111326.571
16	10083574.518	3111326.571
17	10083574.518	3111326.571
18	10083574.518	3111326.571
19	10083574.518	3111326.571
20	10083574.518	3111326.571
21	10083574.518	3111326.571
22	10083574.518	3111326.571
23	10083574.518	3111326.571
24	10083574.518	3111326.571
25	10083574.518	3111326.571
26	10083574.518	3111326.571
27	10083574.518	3111326.571
28	10083574.518	3111326.571
29	10083574.518	3111326.571
30	10083574.518	3111326.571
31	10083574.518	3111326.571
32	10083574.518	3111326.571
33	10083574.518	3111326.571
34	10083574.518	3111326.571
35	10083574.518	3111326.571
36	10083574.518	3111326.571
37	10083574.518	3111326.571
38	10083574.518	3111326.571
39	10083574.518	3111326.571
40	10083574.518	3111326.571
41	10083574.518	3111326.571
42	10083574.518	3111326.571
43	10083574.518	3111326.571
44	10083574.518	3111326.571
45	10083574.518	3111326.571
46	10083574.518	3111326.571
47	10083574.518	3111326.571
48	10083574.518	3111326.571
49	10083574.518	3111326.571
50	10083574.518	3111326.571
51	10083574.518	3111326.571
52	10083574.518	3111326.571
53	10083574.518	3111326.571
54	10083574.518	3111326.571
55	10083574.518	3111326.571
56	10083574.518	3111326.571
57	10083574.518	3111326.571
58	10083574.518	3111326.571
59	10083574.518	3111326.571
60	10083574.518	3111326.571
61	10083574.518	3111326.571
62	10083574.518	3111326.571
63	10083574.518	3111326.571
64	10083574.518	3111326.571
65	10083574.518	3111326.571
66	10083574.518	3111326.571
67	10083574.518	3111326.571
68	10083574.518	3111326.571
69	10083574.518	3111326.571
70	10083574.518	3111326.571
71	10083574.518	3111326.571
72	10083574.518	3111326.571
73	10083574.518	3111326.571
74	10083574.518	3111326.571
75	10083574.518	3111326.571
76	10083574.518	3111326.571
77	10083574.518	3111326.571
78	10083574.518	3111326.571
79	10083574.518	3111326.571
80	10083574.518	3111326.571
81	10083574.518	3111326.571
82	10083574.518	3111326.571
83	10083574.518	3111326.571
84	10083574.518	3111326.571
85	10083574.518	3111326.571
86	10083574.518	3111326.571
87	10083574.518	3111326.571
88	10083574.518	3111326.571
89	10083574.518	3111326.571
90	10083574.518	3111326.571
91	10083574.518	3111326.571
92	10083574.518	3111326.571
93	10083574.518	3111326.571
94	10083574.518	3111326.571
95	10083574.518	3111326.571
96	10083574.518	3111326.571
97	10083574.518	3111326.571
98	10083574.518	3111326.571
99	10083574.518	3111326.571
100	10083574.518	3111326.571

J.C. Bryant to Trustees of the Austin Public Free Schools
 B.M. 11/19/03
 Vol. 005 Pg. 136 TCR

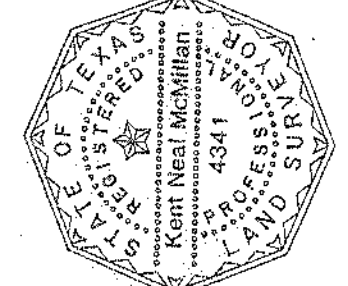


I, Kent Neal McMillan, a Registered Professional Land Surveyor, hereby certify that this map was taken from a true and correct description of the results of an actual survey performed upon the ground under my direction, completed March 13, 2011 made for the purpose of determining the boundaries of Lots 6, 7, 8, 9, 10, 11, 12, 13, 14, 15, and 16 and of the south part of Lot 13 shown hereon.

This map does not purport to show any or all easements and other matters of record, such as adjoining setbacks, to which the boundaries shown hereon are subject. The purpose of this map is to present the place upon the ground from which the boundaries of these parcels were determined upon the ground as discussed in the accompanying report.

Witness my hand and seal of registration,
 March 30, 2011

Kent Neal McMillan
 Kent Neal McMillan
 Registered Professional Land Surveyor
 No. 4341
 418 Ridgewood Road, Austin, Texas 78746
 Telephone (512) 445-5441



H A P O F R E S U R V E Y

OF Lot 13 SAVE and EXCEPT the North 20 ft. thereof, and Lots 14, 15, 16, all being situated in WESTWOOD RIDGE ADDITION, a Subdivision in the City of Austin, Travis County, Texas, according to the Plat recorded in Book 4 Page 127 TCR

March 30, 2011
 Kent McMillan, Land Surveyor
 418 Ridgewood Road
 Austin TX 78746
 Telephone (512) 445-5441

M A P N O . 1 1 - 0 3 6

KEY TO SURVEY MARKS

In the following list:
 1. Standard Rod and Cap denotes a Benchmark on a 2 in. Aluminum Cap stamped "KENT MCMILLAN, SURVEYOR, RPLS 4341" and numbered as noted.
 2. Standard Spike and Washer denotes a Benchmark affixed to a 5/8 in. Iron Rod.
 3. Standard Spike and Washer in Curb denotes a Benchmark affixed to a 2 in. Aluminum Washer stamped "KENT MCMILLAN, SURVEYOR, RPLS 4341" and numbered as noted.
 4. Standard Brass Tablet denotes a Benchmark on a 2 in. Brass Tablet stamped "RPLS 4341, KENT MCMILLAN SURVEYOR" numbered and with additional stamps as noted.

- No. Description
- 1 Standard Spike and Washer in Curb
- 2 Standard Spike and Washer in Curb
- 3 Standard Spike and Washer in Curb
- 4 Standard Spike and Washer in Curb
- 5 Standard Spike and Washer in Concrete
- 6 Standard Spike and Washer in Concrete
- 7 Standard Spike and Washer in Concrete
- 8 Standard Spike and Washer in Concrete
- 9 Standard Spike and Washer in Concrete
- 10 Standard Spike and Washer in Concrete
- 11 Standard Spike and Washer in Concrete
- 12 Standard Spike and Washer in Concrete
- 13 Standard Spike and Washer in Concrete
- 14 Standard Spike and Washer in Concrete
- 15 Standard Spike and Washer in Concrete
- 16 Standard Spike and Washer in Concrete
- 17 Standard Spike and Washer in Concrete
- 18 Standard Spike and Washer in Concrete
- 19 Standard Spike and Washer in Concrete
- 20 Standard Spike and Washer in Concrete
- 21 Standard Spike and Washer in Concrete
- 22 Standard Spike and Washer in Concrete
- 23 Standard Spike and Washer in Concrete
- 24 Standard Spike and Washer in Concrete
- 25 Standard Spike and Washer in Concrete
- 26 Standard Spike and Washer in Concrete
- 27 Standard Spike and Washer in Concrete
- 28 Standard Spike and Washer in Concrete
- 29 Standard Spike and Washer in Concrete
- 30 Standard Spike and Washer in Concrete
- 31 Standard Spike and Washer in Concrete
- 32 Standard Spike and Washer in Concrete
- 33 Standard Spike and Washer in Concrete
- 34 Standard Spike and Washer in Concrete
- 35 Standard Spike and Washer in Concrete
- 36 Standard Spike and Washer in Concrete
- 37 Standard Spike and Washer in Concrete
- 38 Standard Spike and Washer in Concrete
- 39 Standard Spike and Washer in Concrete
- 40 Standard Spike and Washer in Concrete
- 41 Standard Spike and Washer in Concrete
- 42 Standard Spike and Washer in Concrete
- 43 Standard Spike and Washer in Concrete
- 44 Standard Spike and Washer in Concrete
- 45 Standard Spike and Washer in Concrete
- 46 Standard Spike and Washer in Concrete
- 47 Standard Spike and Washer in Concrete
- 48 Standard Spike and Washer in Concrete
- 49 Standard Spike and Washer in Concrete
- 50 Standard Spike and Washer in Concrete
- 51 Standard Spike and Washer in Concrete
- 52 Standard Spike and Washer in Concrete
- 53 Standard Spike and Washer in Concrete
- 54 Standard Spike and Washer in Concrete
- 55 Standard Spike and Washer in Concrete
- 56 Standard Spike and Washer in Concrete
- 57 Standard Spike and Washer in Concrete
- 58 Standard Spike and Washer in Concrete
- 59 Standard Spike and Washer in Concrete
- 60 Standard Spike and Washer in Concrete
- 61 Standard Spike and Washer in Concrete
- 62 Standard Spike and Washer in Concrete
- 63 Standard Spike and Washer in Concrete
- 64 Standard Spike and Washer in Concrete
- 65 Standard Spike and Washer in Concrete
- 66 Standard Spike and Washer in Concrete
- 67 Standard Spike and Washer in Concrete
- 68 Standard Spike and Washer in Concrete
- 69 Standard Spike and Washer in Concrete
- 70 Standard Spike and Washer in Concrete
- 71 Standard Spike and Washer in Concrete
- 72 Standard Spike and Washer in Concrete
- 73 Standard Spike and Washer in Concrete
- 74 Standard Spike and Washer in Concrete
- 75 Standard Spike and Washer in Concrete
- 76 Standard Spike and Washer in Concrete
- 77 Standard Spike and Washer in Concrete
- 78 Standard Spike and Washer in Concrete
- 79 Standard Spike and Washer in Concrete
- 80 Standard Spike and Washer in Concrete
- 81 Standard Spike and Washer in Concrete
- 82 Standard Spike and Washer in Concrete
- 83 Standard Spike and Washer in Concrete
- 84 Standard Spike and Washer in Concrete
- 85 Standard Spike and Washer in Concrete
- 86 Standard Spike and Washer in Concrete
- 87 Standard Spike and Washer in Concrete
- 88 Standard Spike and Washer in Concrete
- 89 Standard Spike and Washer in Concrete
- 90 Standard Spike and Washer in Concrete
- 91 Standard Spike and Washer in Concrete
- 92 Standard Spike and Washer in Concrete
- 93 Standard Spike and Washer in Concrete
- 94 Standard Spike and Washer in Concrete
- 95 Standard Spike and Washer in Concrete
- 96 Standard Spike and Washer in Concrete
- 97 Standard Spike and Washer in Concrete
- 98 Standard Spike and Washer in Concrete
- 99 Standard Spike and Washer in Concrete
- 100 Standard Spike and Washer in Concrete

LEGEND

- Found Survey Marker taken for:
 - Original monument shown on plat of BRYKER-WOODS ADDITION "B" (Pipes 91 and 97).
 - Iron Stake called for in Deed recorded Vol. 605 Pg. 136 TCR (Pipe 90), or
 - Original monument shown on plat of WESTWOOD RIDGE ADDITION (All other Pipes) (refer by number to KEY TO SURVEY MARKS for description)
- Found Survey Marker (refer by number to KEY TO SURVEY MARKS)
- Placed Survey Reference Point (refer by number to KEY TO SURVEY MARKS)
- Placed Boundary Marker (refer by number to KEY TO SURVEY MARKS)
- Survey data taken or computed from Deed recorded Vol. 605 Pg. 136 TCR
- Survey data taken from Plat of BRYKER-WOODS ADDITION "B" or from Plat of WESTWOOD RIDGE ADDITION, both prepared by O. Leonard, Engineer
- TCR Travis County Deed Records
- TCR Travis County Plat Records
- BOC Line of Back of Curb