

I, Thorne W. Holmes hereby certify that I am a Registered Civil Engineer and Licensed Land Surveyor of the State of California and that this map consisting of One (1) sheet correctly represents a survey made by me, completed in June, 1939 and that all the monuments shown hereon actually exist and their positions are correctly shown.

T. W. Holmes
R. E. No. 2900 - J. S. No. 1940

All exterior boundary lines of the parcel of land shown on this map were run by transit method. The bearings shown on this map are based on Solar observations.

Filed for record at request of E. H. Smith this 17 day of Mar 1941, at 6 minutes past 2 o'clock P. M.

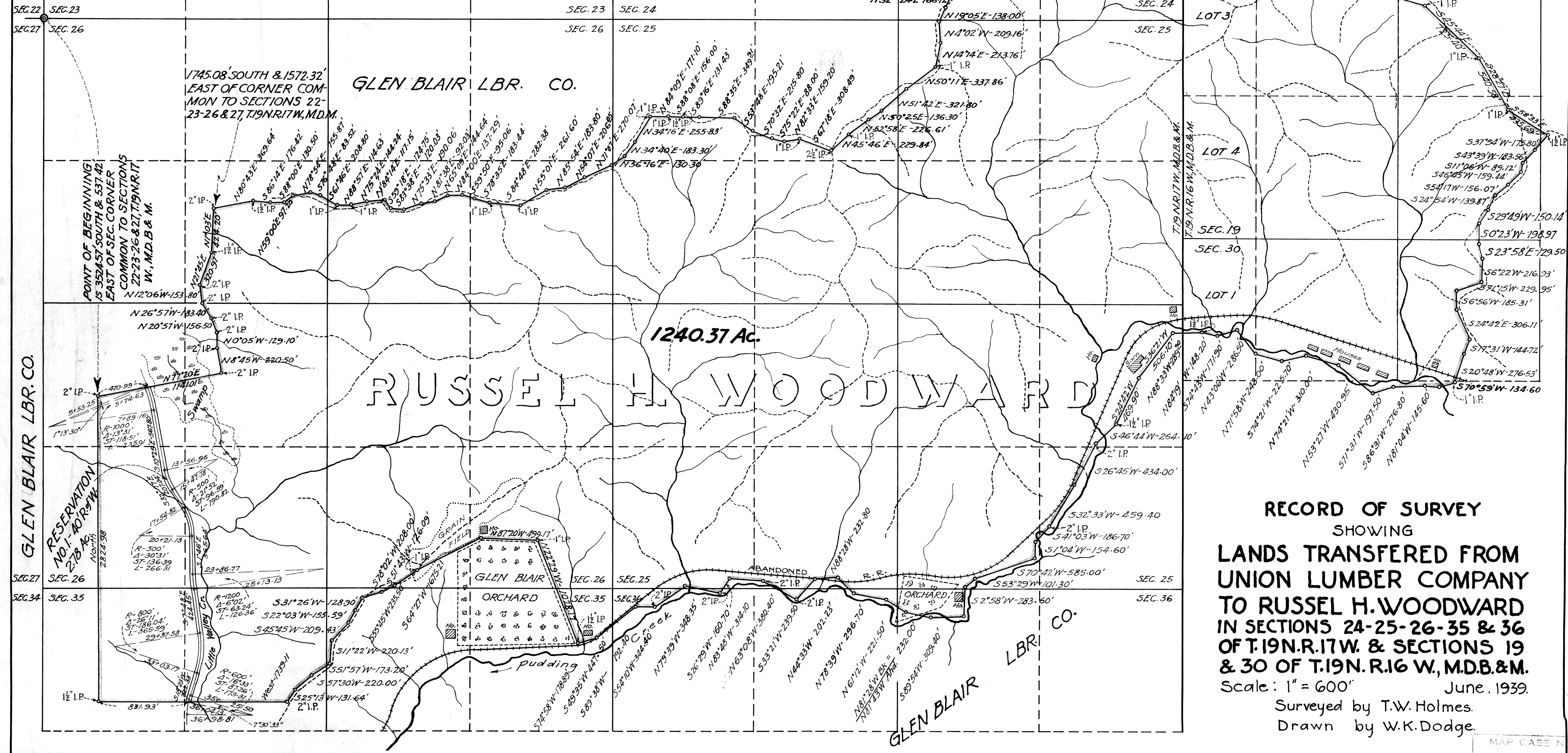
E. H. Smith
Recorder

Filed in Drawer _____, Page _____, Official Surveys, this _____ day of _____, 1941.

I, hereby certify that I have checked the within map for correctness and form and hereby approve it for Record this 17 day of March 1941

E. H. Smith
County Surveyor of Mendocino County

Note:- I.P. Signifies Iron Pipe.



RECORD OF SURVEY
SHOWING
LANDS TRANSFERRED FROM
UNION LUMBER COMPANY
TO RUSSEL H. WOODWARD
IN SECTIONS 24-25-26-35 & 36
OF T.19N.R.17W. & SECTIONS 19
& 30 OF T.19N.R.16 W, M.D.B.&M.
Scale: 1" = 600' June, 1939.
Surveyed by T.W. Holmes.
Drawn by W.K. Dodge.

MAP CASE NO. 8
DRAWN BY 12