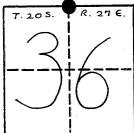


FLORIDA DEPARTMENT OF NATURAL RESOURCES

CERTIFIED CORNER RECORD

CORNER DESCRIPTION:

NORTH 1/4 corner of Section(s) 36,
 Township 20S, Range 27E,
 Tallahassee Base and Meridian: ORANGE
 County(s), Florida



CORNER MONUMENT

Description of original monument and accessories and subsequent restoration. Give sources of information

ORIGINAL SURVEY BY J.M.GOULD 1848 VAR. 4° 30' E

BEARING TREE S51°E 35LKS
 BEARING TREE N 4°W 10LKS

NOTE: TYPE OF BEARING TREE NOT INDICATED.

SUBSEQUENT RESURVEY BY J.O.FRIES 1905

PINE S51°E 35LKS
 PINE N 4°W 10LKS

MONUMENT DESCRIPTION:

Description of corner evidence found:

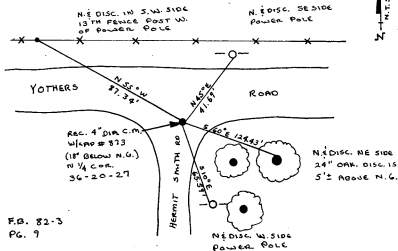
REC. 4" DIA. C.M. W/CAP #873 (18" BELOW N.G.)

Description of corner evidence set:

Florida State Plane Coordinates of Corner (if determined):

x: _____ y: _____ Zone: _____

Basis for coordinates:

SKETCH

F.B. 82-3
Pg. 9

REFERENCE MEASUREMENTS (at least three):

Description	Distance		Bearing (MAG.) (Give Basis)
	feet	metres	
N.6 DISC. SE SIDE POWER POLE	41.69'	12.71M	N 45° E
N.6 DISC. NE SIDE 24" OAK	124.43'	37.93M	S 60° E
N.6 DISC. W SIDE POWER POLE	65.59'	19.99M	S 10° E
N.6 DISC. SW SIDE 13TH FENCE POST W OF POWER POLE	87.34'	26.62M	N 55° W

STATEMENT OF METHOD TO DETERMINE CORNER LOCATION (lost corners only)

SURVEYORS CERTIFICATE: This is to certify that the monument and accessories indicated above are correctly described and shown as they were on 1-26-82 to the best of my knowledge and ability.

M. J. Cavallero
Signature

#3701

Registration No.

2-3-82

Date

ORANGE COUNTY ENGINEERING
Firm or Agency

2450 33rd. STREET
Address

ORLANDO, FLORIDA, 32805

Checked By: Dani Smith

Accepted and Filed: 2/14/82

Date

Douglas A. Thompson
State Cadastral Surveyor