

Captivate Quick Guide

GS18T/I - Tilt Compensation FW Update

November 2024

This Quick Guide will outline the procedure of installing the updated Firmware for GS18T/I GS Sensors to ensure tilt compensation functionality past **December 31st 2024**.

Note: If you are **NOT** a Captivate User (ie. Microsurvey FieldGenius, Evidence Recorder, etc.) download a separate guide here: [GS18 – FW through Windows PC](#)

Requirements:

CS Controller
GS Sensor
Full (100%) GS Battery
SD Card
Firmware File

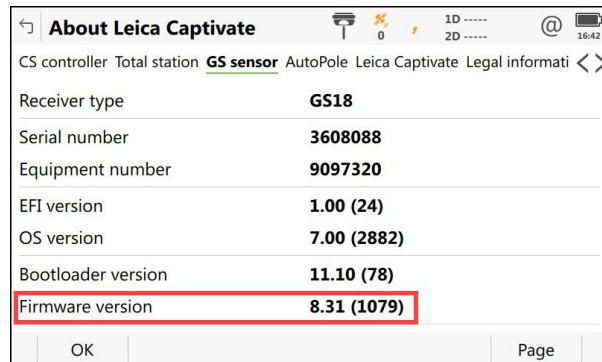
Optional:

Leica GEV234 Cable

1. Determine Firmware Version

To determine the firmware version on your current please follow the following steps in Captivate:

[Video: Check FW version on a GS Sensor](#)



Turn on CS Controller or CS/CC Tablet

1. Connect to GS18
2. Select Settings > About Leica Captivate
3. Under the GS Sensor Tab the FW will be displayed

Firmware version = 9.x: No further action required

[Firmware version = 8.x](#)

[Firmware version = 7.x](#)

[Firmware version = 6.x](#)

[Firmware version = 5.x:](#)

[Firmware version = 4.x](#)

[Firmware version = 3.x](#)

Download required FW version

The correct FW to download is determined by the first number in the FW version. For example, in the above screenshot FW version = **8.31**

Download version 8.x by clicking the link to the left.

Note: If you are a myWorld user the required FW is available for download from the myWorld Software page for the GS18

- when it has to be **right**

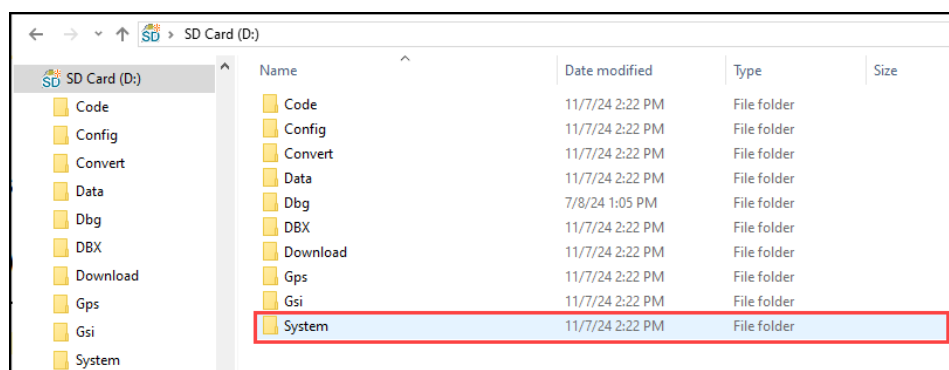
2. Update Firmware

[Video: Update Firmware Version – Using CS20:](#)

[Video: Update Firmware Version – Using CS/CC Tablet:](#)

1. Copy Firmware file to the SD Card – System Folder

The firmware for a GS18 is loaded via an SD Card. The file needs to be stored in the **System** folder.



2. Insert SD Card into the GS Sensor

The GS Sensor reads the firmware files directly from the SD Card that has been inserted into the GS SD Card Slot. If the SD Card is not inserted the firmware file cannot be uploaded.



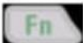


3. Update requires a cable or BT Connection

The CS Controller or CS/CC Tablet requires a cable or BT connection to the GS sensor in Captivate. In theory this should happen automatically if the Captivate and GS Sensor are ready to be used.



Note: The GS sensor does not technically need to “sync” in Captivate with Cable or BT connection modes. With the cable the physical connection should be sufficient without changing any settings. With a BT connection a BLUE BT connection light should be sufficient.

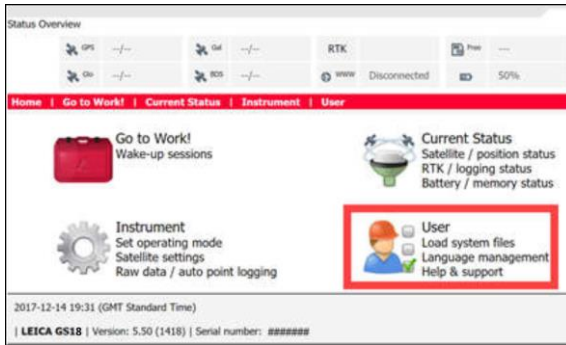
If you are trying to load the FW directly from a BT connection to a Windows 10/11 PC please follow these instructions here: [LINK TO DOCUMENT](#)

4. Access Windows EC7 or Windows 10/11 Desktop

CS20 Controller	CS/CC Tablet
<p>From the Main Menu Press and HOLD the Fn</p>  <p>Then press Back/Windows</p> 	<p>Swipe right from the left side of the Tablet. Then select New Desktop:</p> 

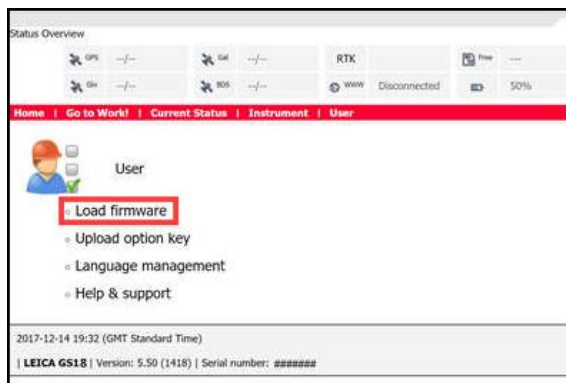
5. Open the GS Webserver

CS20 Controller	CS/CC Tablet
<p>Select the Webserver icon that matches the CS to GS connection type:</p> 	<p>Open a Webbrowser (ie. Edge. Chrome or ie)</p>  <p>Then type in the IP address that matches the connection type:</p> <p>Cable: 192.168.254.2</p> <p>Bluetooth: 192.168.253.2</p> <p>WLAN: 192.168.251.2</p>

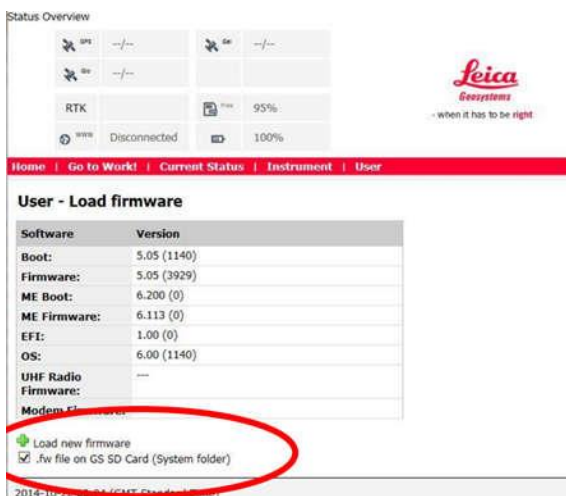


Navigate the Webserver to load the FW

6. Select User



7. Select Load Firmware



8. Check .fw file on GS SD Card System Folder & Terms & Conditions if it appears

9. Select Green Cross – Load new FW to begin the update process

Note: DO NOT power down the GS Sensor during a FW upload.

This process will take several minutes to complete. The GS sensor will power down and back up again while the firmware installs. If the LED's on the GS are flashing or they are powered off the GS is STILL updating the firmware and should be left alone.



10. Confirmation notification

The webserver will display a notification when the update is complete. If the FW fails to update please verify the FW files on the SD Card and try again.

If using a Windows Tablet you may need to reconnect in Captivate to verify FW version update

3. Verify Firmware Version

To verify the firmware version was completed successfully open Captivate and verify FW version is updated:

[Video: Check FW version on a GS Sensor](#)

About Leica Captivate	
CS controller	Total station GS sensor AutoPole Leica Captivate Legal informati < >
Receiver type	GS18
Serial number	3608088
Equipment number	9097320
EFI version	1.00 (24)
OS version	7.00 (2882)
Bootloader version	11.10 (78)
Firmware version	8.80
OK	Page

Turn on CS Controller or CS/CC Tablet

4. Connect to GS18
5. Select Settings > About Leica Captivate
6. Under the GS Sensor Tab the FW will be displayed verify that it is now shown as FW version x.80

Technical Support:

If there are any problems with updating your GS firmware, please contact US/Canada Technical support:

Phone: 800-327-4773

Email: survey.support@leicaus.com

Customer Care Plans:

If you would like to take this opportunity to explore the benefits of updating your current Customer Care Plan and updating to the most current version of Leica Captivate, please contact your local Sales Representative or fill out the contact form below and a Sales Rep will contact you.

[Contact Sales \(US & Canada\) | Leica Geosystems](#)

- when it has to be **right**

Leica
Geosystems